

# Preliminary Operational Waste Management Plan

Albury Wodonga Regional Hospital Project  
Northeast Building



**JOHNSTAFF PROJECTS**

VERSION v3  
5 March 2025

## CONTENTS

<b>Preliminary Operational Waste Management Plan .....</b>	<b>i</b>
<b>1 Introduction.....</b>	<b>3</b>
<b>2 Key Participants / Stakeholders.....</b>	<b>5</b>
<b>3 Organisational Chart .....</b>	<b>5</b>
<b>4 Key Milestones.....</b>	<b>Error! Bookmark not defined.</b>
<b>5 Purpose of this Plan .....</b>	<b>5</b>
<b>6 Waste Management During Operations .....</b>	<b>6</b>
<b>7 Waste Streams .....</b>	<b>6</b>
<b>8 Northeast Building Design .....</b>	<b>7</b>

Version	Date	Issued To	Status
1	11/2/2025	Ian Gibson – Health Infrastructure	For REF submission
2	20/2/2025	Ian Gibson – Health Infrastructure	For REF submission
3	05/03/2025	Clare Barraclough – Health Infrastructure	For REF submission

## 1 Introduction

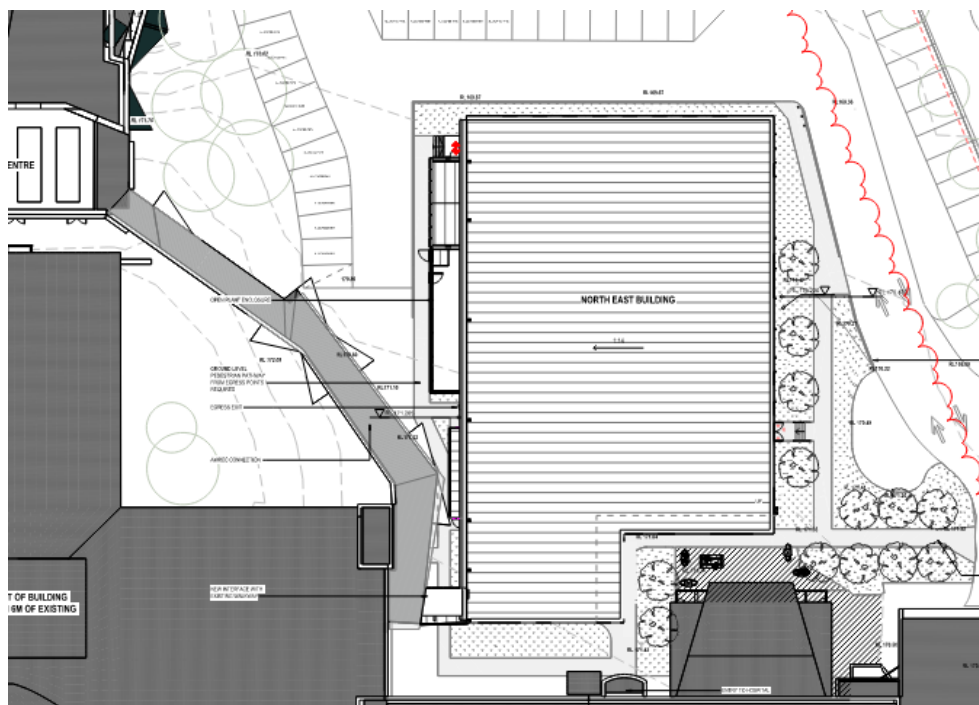
Stage 1 Decant Works of the Albury Wodonga Regional Hospital Redevelopment Project will include the delivery of a two-storey building to the north-east of the site for relocation of services that are dislocated by the Clinical Services Building (CSB) construction and also to provide a long-term administration building for Albury Wodonga Hospital (AWH).

The Northeast Building is being designed with modular construction principles with the building upper level containing clinical spaces and connects to the main hospital entry level (level 2) and the lower level contains administrative functions for staff.

The proposed activity comprises:

- Relocation of two existing demountables.
- Demolition and removal of hardstand including walkways and associated pedestrian infrastructure, and the existing lower staff at-grade carpark resulting in a loss of 41 parking spaces. Make good the interface and include pedestrian movement works and road marking.
- Construction of a new two storey northeast building including Administration, Allied Health, Education Training and Research, Medical Lounge, Staff Amenities, and Pharmacy with link bridge to L02 corridor, which is the existing public entry level, adjacent existing surgical wards and operating theatres.
- Landscaping and paving works to new northeast building edge and interface.
- Relocation of existing fire hydrant and some inground services diversions.

The plans below illustrate the scope of works required:



Northeast Building – Site Plan

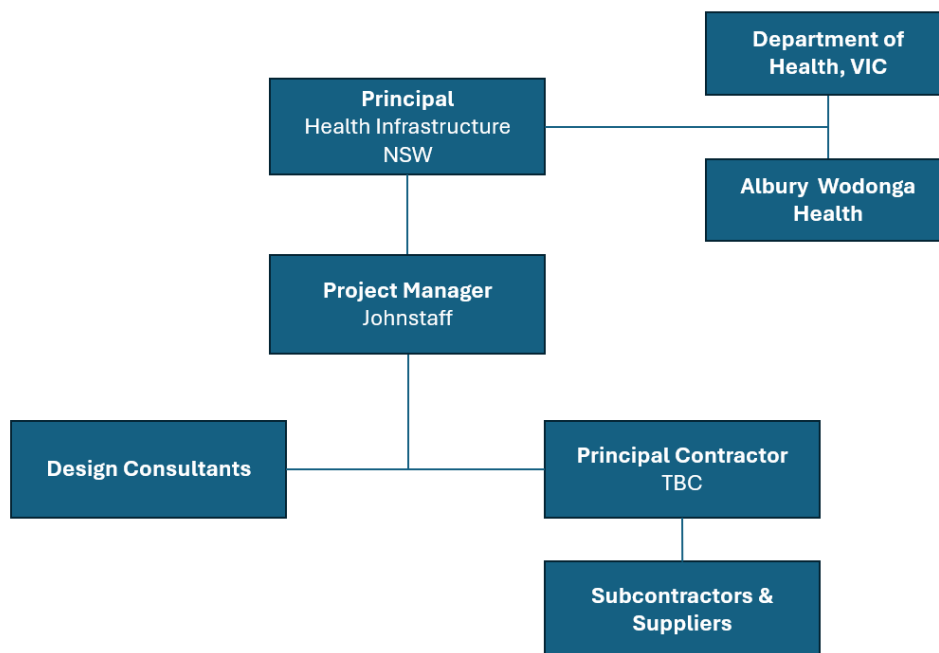
Albury Wodonga Regional Hospital – Northeast Building REF

## 2 Key Participants / Stakeholders

Stakeholder	Contact Details
Client(s)	Health Infrastructure: Ian Gibson 0421813154
Client Representative(s)	Johnstaff: Matt Inch 0467362871
Principal Contractor	<i>To be appointed</i>

## 3 Organisational Chart

Project Organisational Chart



## 4 Purpose of this Plan

This Operational Waste Management Plan has been prepared to provide a preliminary assessment of the potential environmental impacts that could arise from the redevelopment at Albury Hospital.

This report has been prepared to outline the proposed plan to manage operational waste on site at completion of the project.

## 5 Waste Management During Operations

Operational waste management services for the Albury Hospital will be provided in accordance with all relevant regulations and Codes of Practice, including infection control guidelines, Department of Environment and Conservation guidelines, and the Industry Code of Practice for the Management of Clinical and Related Wastes.

The waste management services for the Albury Wodonga Regional Hospital project will be consistent with the existing management measures in place at Albury Hospital currently and there will be little to no change in waste production.

## 6 Waste Streams

As part of planning of the new hospitals operations, likely waste streams have been identified. The likely waste streams include:

- General Waste
- Paper/Cardboard Recycling
- Co-Mingled Recycling
- Food and Garden Organics
- Clinical waste
- Pharmaceutical waste
- Sharps
- eWaste recycling
- Battery recycling
- Printer Cartridge/Toner Recycling
- Secure Document Destruction
- Secure eWaste Destruction
- Metal Recycling
- Rigid Medical Plastic Recycling (i.e. items not eligible for co-mingled recycling)

Wherever possible, streaming will occur at point of disposal.

Logistics of managing the waste streams have been assessed and are proposed to be serviced as per the below table:

### Waste Quantities and Service Frequency for External Bins

Waste Stream	Assets	Frequency
General Waste	General Waste Compactor	3 x Weekly (M, W, F)
Co-Mingled Recycling	660L for internal use	Weekly
Paper / Cardboard Recycling	660L for internal use	Weekly

Food / Garden Organics	240L Bins	Weekly
Clinical Waste	240L Bins	Weekly
Cytotoxic Waste	240L and 120L Bins	Weekly
Pharmaceutical Waste	120L Bins	Weekly
Sharps	19L Bins	Fortnightly

#### Waste Quantities and Service Frequency for Recycling Streams

Waste Stream	Assets	Frequency
Printer Cartridge/Toner Recycling	Dedicated recycling bins	Ad hoc
Batteries	Dedicated recycling bins	Ad hoc
e-Waste	Dedicated recycling area	Ad hoc
Secure Document/Confidential Paper for shredding	240L Bins	Ad hoc
Metal Recycling	Dedicated recycling area	Ad hoc
Rigid Medical Plastics	Dedicated recycling area	Ad hoc

## 7 Northeast Building Design

The Northeast building design includes measures to operationally manage waste, including:

- Dirty utility room
- Cleaners room
- Bins placed at key points planned through the facility



## Preliminary Operational Waste Management Plan

The internal movements and logistics of the waste flow for the Northeast Building to the dock is outlined below:

